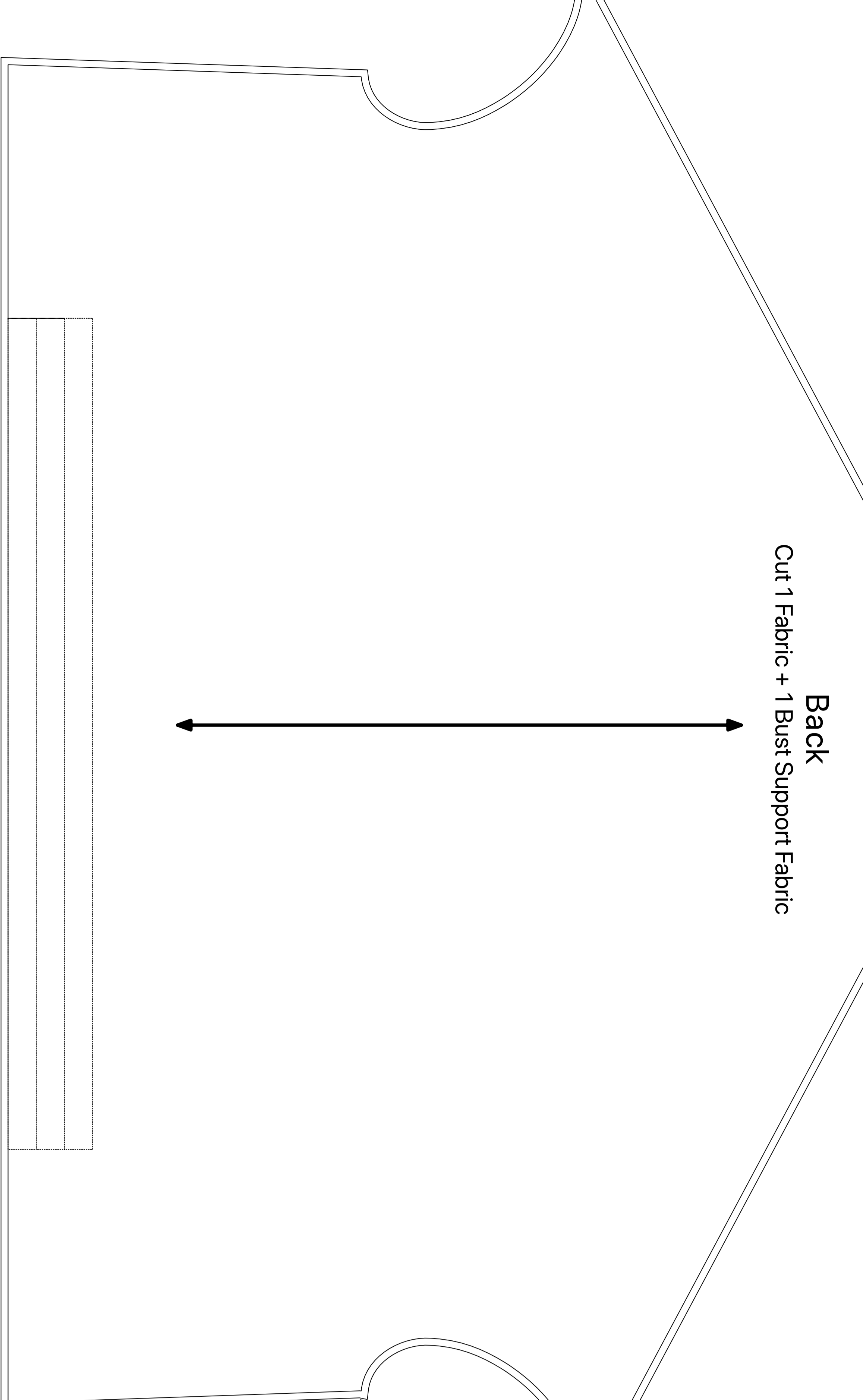
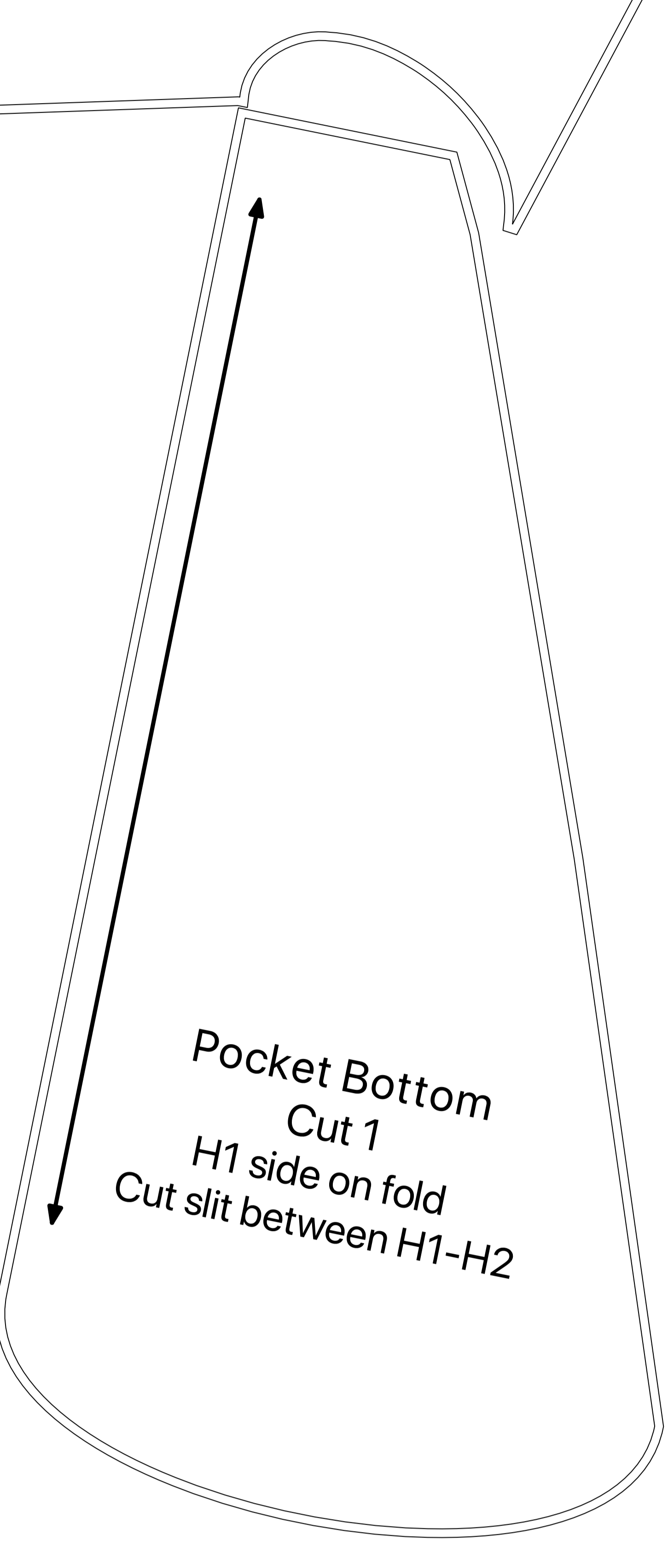
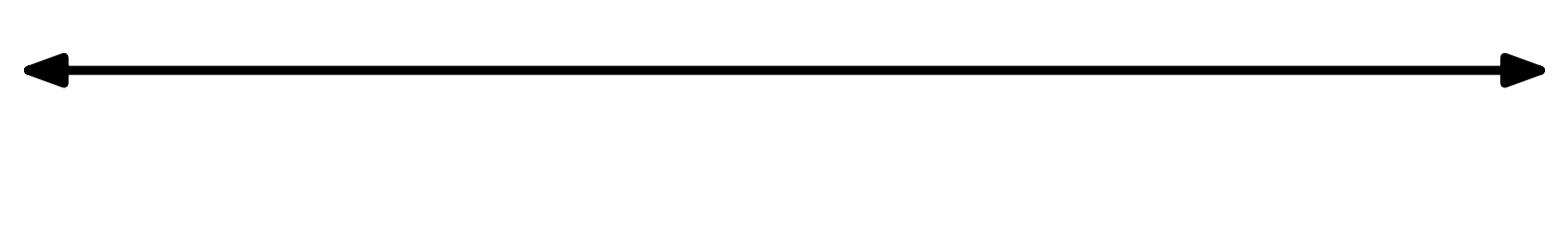


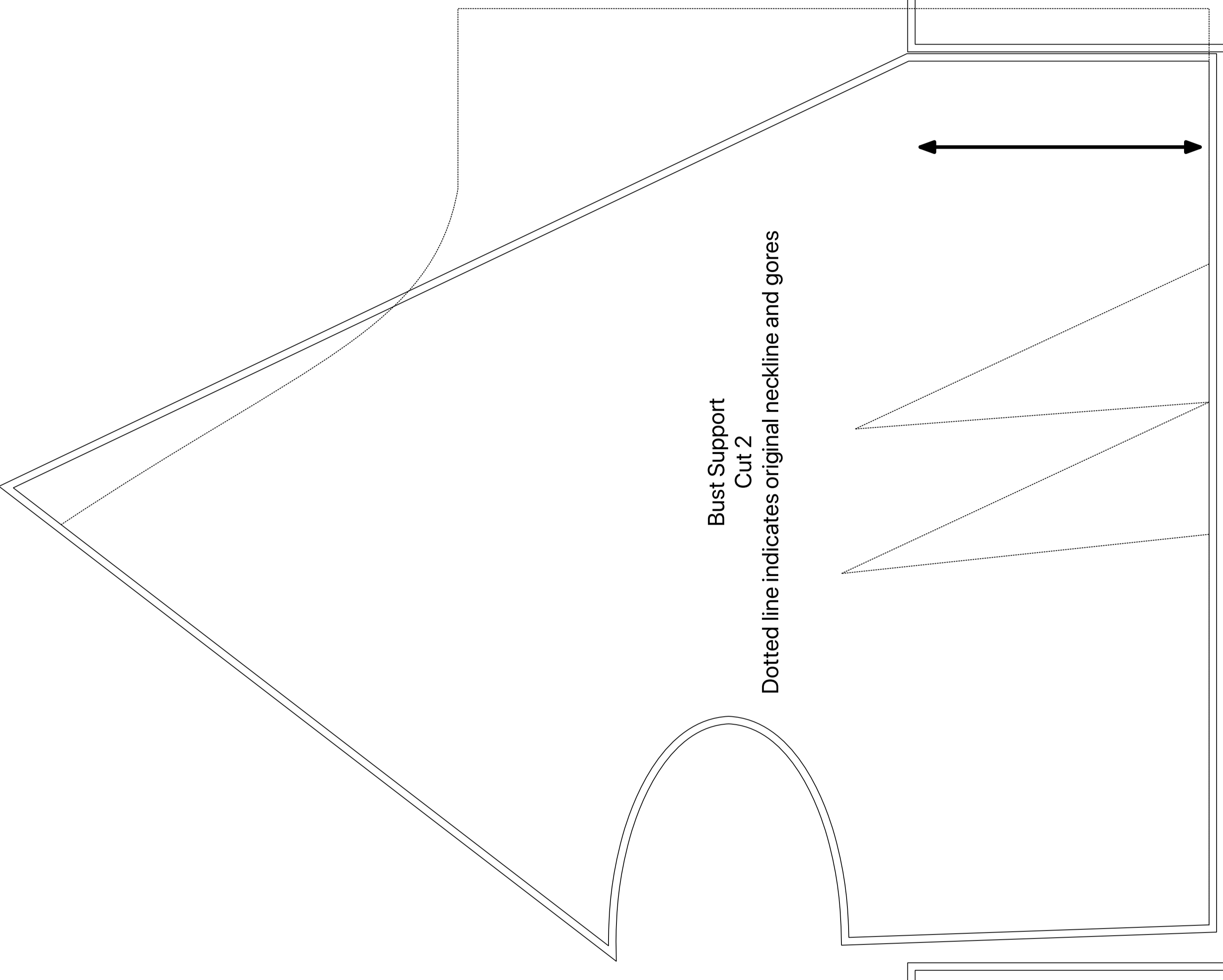
Front
Cut 2
Cartridge pleat fabric and lining from B3 to center bust, so that B3 lines up with B6



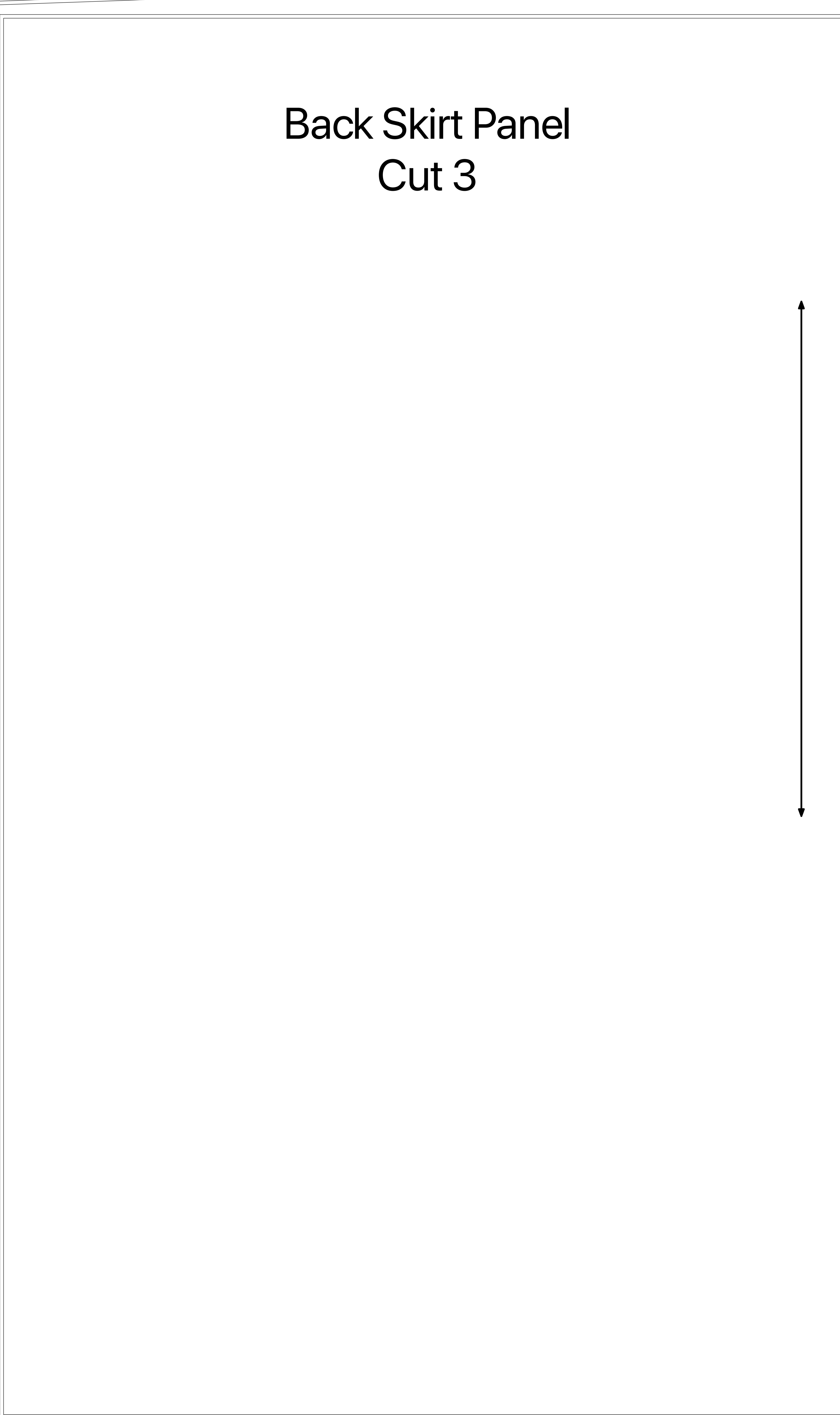
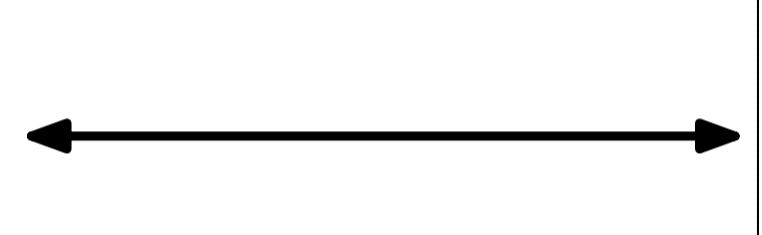
Back
Cut 1 Fabric + 1 Bust Support Fabric



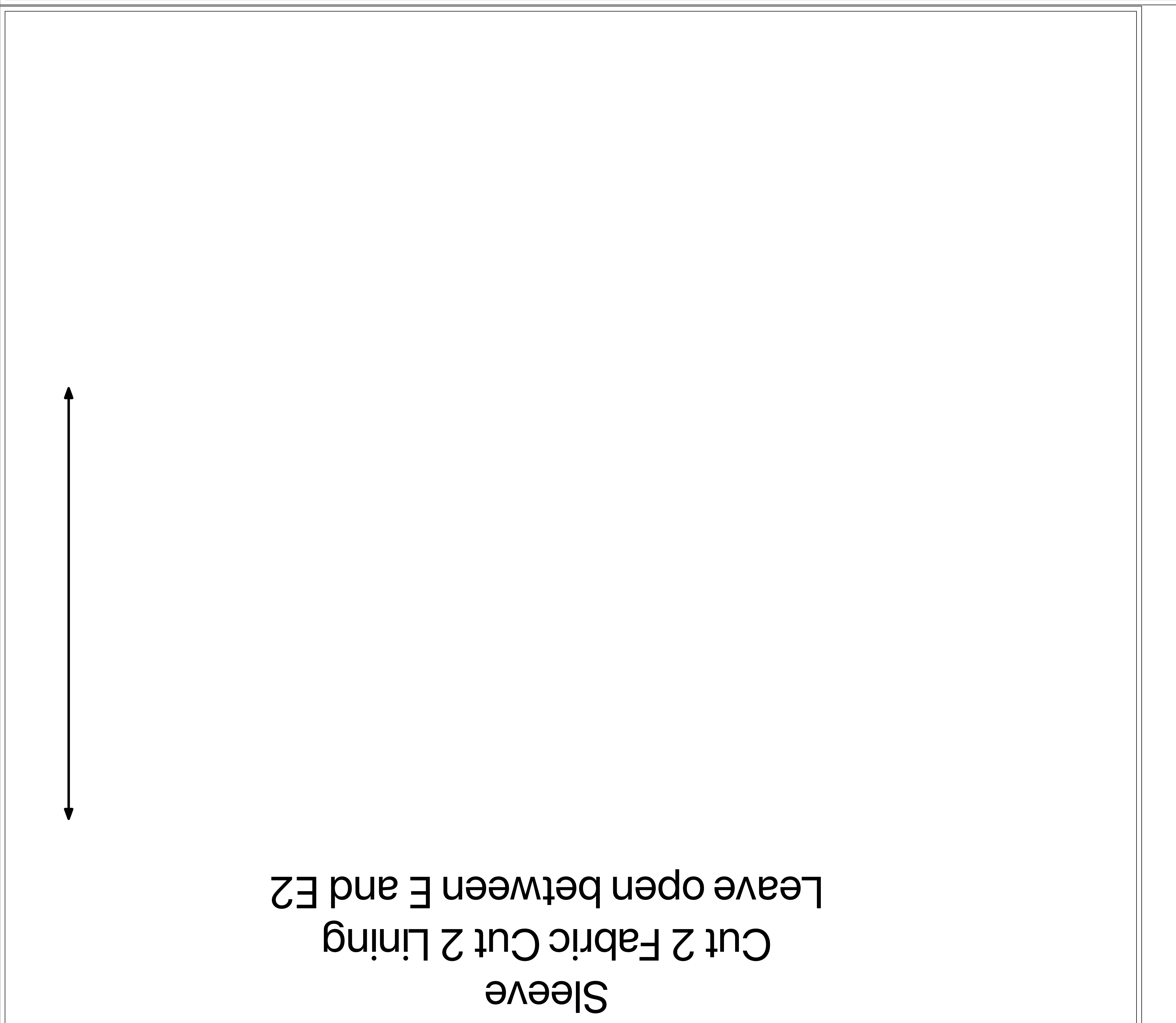
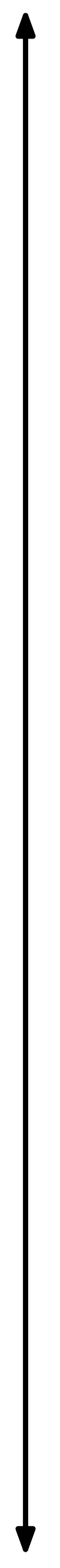
Pocket Bottom
Cut 1
H1 side on fold
Cut slit between H1-H2



Bust Support
Cut 2
Dotted line indicates original neckline and yokes



Back Skirt Panel
Cut 3



Sleeve
Cut 2 Fabric Cut 2 Lining
Leave open between E and E2

